


Inxight Software, Inc.

U.S. | 500 Macara Avenue, Sunnyvale, CA 94085
 Phone: 408.738.6200 | Fax: 408.738.6311

Europe | Centaur House, Ancells Business Park, Ancells Road,
 Fleet, Hampshire, GU51 2UN U.K.
 Phone: +44 (0) 1252 761314 | Fax: +44 (0) 1252 761315



With Inxight VizServer, users can visually navigate, explore and understand large information collections to quickly find the information they need, boosting productivity, speeding product time-to-market, and making faster and more informed business decisions.

Inxight VizServer™

Speeds and Simplifies the Exploration and Sharing of Information

The key to turning data into useful information is empowering users to understand and interact with that data. It is often much easier to see trends and relationships visually than by poring through pages of statistics or text.

Inxight's award-winning visualization products – StarTree®, TableLens® and TimeWall™ – have been used in hundreds of applications, from research and development to business intelligence to relationship analysis.

Available visualizations include:

- **Inxight StarTree**, which provides navigation and display options for large information hierarchies or relationships.
- **Inxight TableLens**, which has interactive views for large amounts of tabular data, making it easier to see trends.
- **Inxight TimeWall**, which enables users to see patterns over long time horizons, while also being able to focus in on a particular time segment of interest.

Inxight VizServer provides intuitive and effective methods for exploring large information collections. It is a wizard-based system that makes it faster to set up Inxight visualizations for more rapid deployment and success, freeing IT departments for other tasks. It is simple to use, with flexible, robust deployment options and browser-based access.

By making information easier to see and understand, Inxight VizServer creates true value from information assets by placing relevant information at the fingertips of employees, customers and partners. It enables users to make faster, better-informed decisions.

For example, today Inxight StarTree is being used to reveal terrorist networks, for taxonomy navigation, and to show organization charts or relationships. Inxight TableLens is used to analyze medical population characteristic correlations and financial information. And Inxight TimeWall is being used for brand tracking, terrorist attack timeline storyboarding, and document collection navigation.



Benefits to Organizations

- Connect to any existing dataset and enhance that information by providing active visualizations in less than one day.
- Utilize enterprise information extensively in decision-making and knowledge tasks.
- Expand the use and re-use of information by improving information sharing.
- Boost productivity by making information readily available in real-time.
- Facilitate broader awareness of business operations and results.

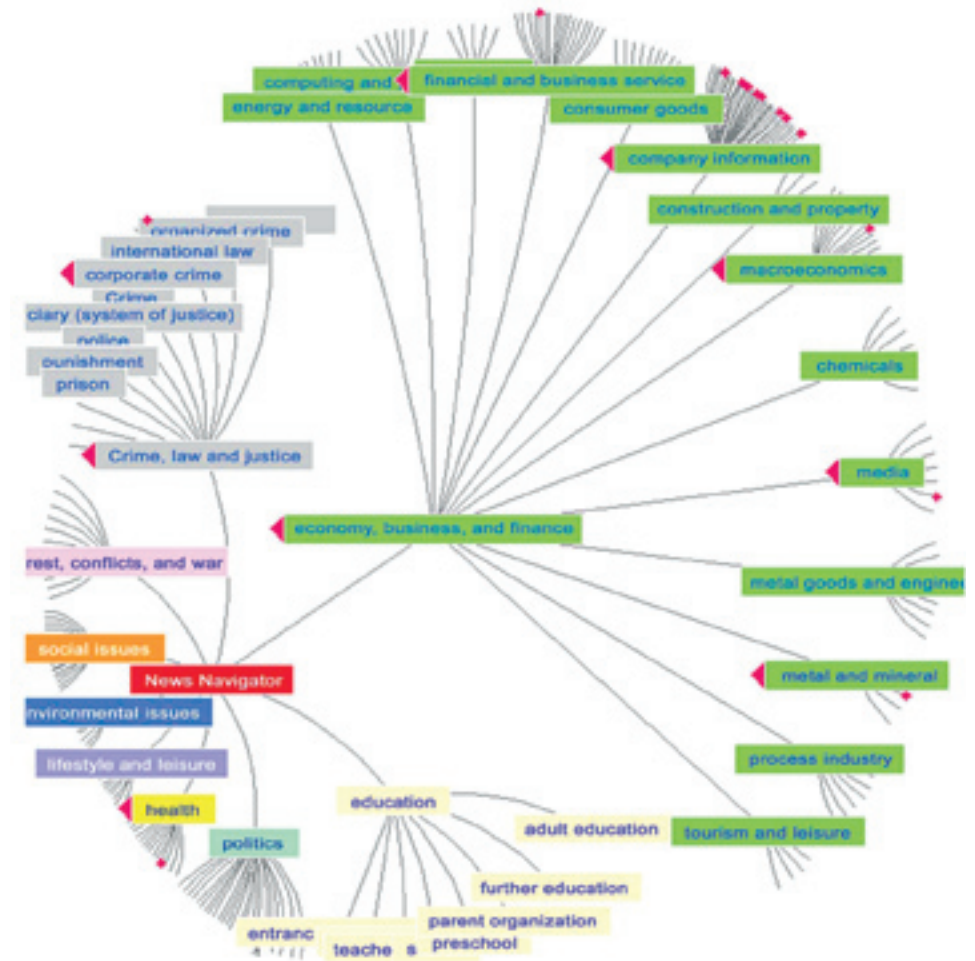
Benefits for Users

- Understand relationships inside and among large amounts of information across disparate data sets.
- Navigate information sets, Web sites and networks faster.
- Locate patterns, trends, correlations and outliers that would otherwise go unnoticed.
- Access and interact with complex data sets, without additional training or reliance on statisticians or query experts.
- Share findings with others in a clear, compelling and visual manner.

Inxight VizServer — Easily navigate, explore and understand large information collections

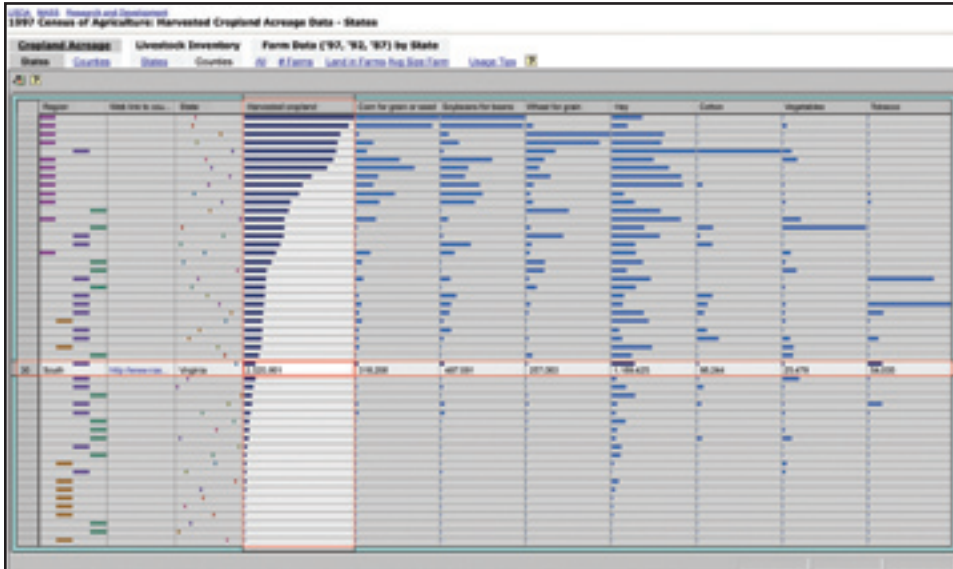
Inxight VizServer offers these key visualization technologies:

- **Inxight StarTree** provides a unique graphical user interface for interacting with large data sets that reflect relationship links, hierarchical structures, networks and graphs. It presents even the most complex and large hierarchies and relationships in an easy-to-understand view.



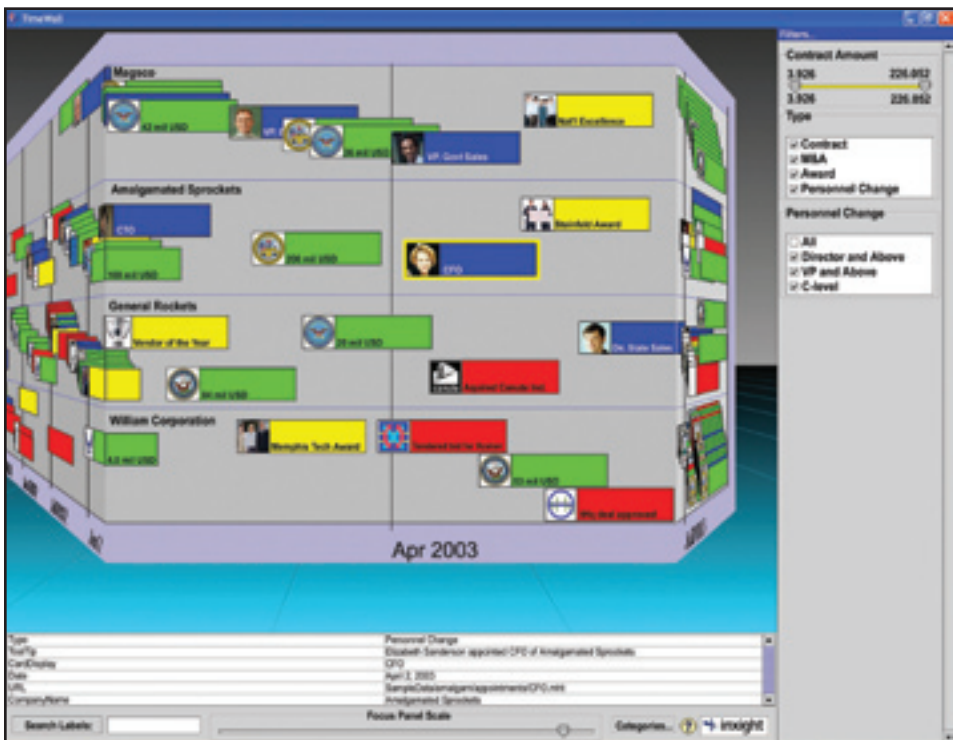
Inxight StarTree makes navigation and understanding of large hierarchical datasets simple. In this case, a 30,000-term taxonomy is displayed on a single screen.

- **Inxight TableLens** enables users to find patterns, trends, correlations and unusual events stored in table-based information sources such as customer records, e-commerce transactions and other operational information streams.



Inxight TableLens improves navigation and understanding of large tabular datasets. In this case, correlations between different crop growth patterns are quickly revealed.

- **Inxight TimeWall** is the most powerful timeline visualization tool on the market. Users can see patterns of events over long time horizons while focusing on specific events of interest, empowering more efficient, illuminating storytelling and event analysis.



Inxight TimeWall allows users to analyze trends and relationships over time, discerning patterns to develop predictive models.

"Inxight software really does let you see patterns and structure in the data that you'd never see otherwise. It's really nice for getting the big picture."

— U.S. Agriculture Department's
National Agricultural Statistics
Service

"Inxight VizServer's strengths are its ease of use and its simple elegance for visualizing large numbers of variables simultaneously, without the legwork of other products I have used."


— Janssen Pharmaceutica

"Only ProactiveNet's hyperbolic tree, Powered by Inxight, can provide the capability to drill down to the root cause of performance problems."

— ProactiveNet

"Inxight StarTree is a very unique solution that allows quick navigation of information collections to easily find needed information. The easy-to-learn interface enables users to focus on specific areas of interest while maintaining the context of the entire collection. And StarTree is very easily deployed via the Web."

— National Science Digital Library

VizServer Publisher 


TableLens **StarTree** connections admin help

StarTree Wizard

SETUP DATA TREE TYPE PROPERTIES STYLE SUMMARY

Step 3: Choose Tree Type

Relationship-based




Relationship-based trees are good for cases where there is a hierarchical relationship among individual records of the same kind in the database.

Examples: organization chart, parts list, flowchart

[More info](#)

Level-based



Level-based trees can represent taxonomies or other datasets where there is a hierarchy among the attributes of each record. Items at each level group the items in the next level.

Examples: "the animal kingdom", baseball players grouped by division and league, catalog, document collections

[More info](#)

Powerful wizards make setting up visualizations easy.

Technical Specifications

- Web-based, J2EE-compliant enterprise application that publishes Java applets to Web servers.
- Runs in any browser.
- Easy administration with wizard-based publication of Inxight StarTree, Inxight TimeWall and Inxight TableLens visualization modules.
- Connects to any JDBC-compliant data-base, including Oracle, MySQL, SQL Server and Sybase.
- Connects via SQL or XML to Inxight SmartDiscovery™ for integration between structured and unstructured data.
- Embedded crawler automatically maps information from file systems and Web sites.
- Features a flexible scheduler for real-time updates.
- Leverages existing security mechanisms for access control to enterprise information.
- Optional software developer kits allow licensees to create custom applets and applications.
- Stable, extensible solution for deploying all Inxight visualization technologies.

About Inxight

Inxight Software, Inc. is the leading provider of enterprise software solutions for information discovery. Using Inxight solutions, companies can better discover, retrieve and connect with unstructured, semi-structured or structured text. Inxight is the only company that provides a complete, scalable solution to enable information discovery in all major languages. Customers include enterprise companies such as Air Products, Novartis, Procter & Gamble, Purdue Pharma and Thomson, multiple U.S. and foreign government agencies, including the Department of Defense, Defense Intelligence Agency, Department of Homeland Security and Commonwealth Secretariat, and software OEMs such as SAP, SAS, Oracle and IBM. The company has offices throughout the United States and Europe. For more information, visit www.inxight.com or call 408-738-6200 (in the U.S.) or +44 (0) 1252 761314 (in Europe).

Copyright ©2006 Inxight Software, Inc. All rights reserved. Inxight, StarTree, SmartDiscovery, VizServer, TableLens and TimeWall are trademarks or registered trademarks of Inxight Software, Inc. All other corporate names or trademarks stated herein are the property of their respective companies.